



EMBRACE
LUXURIOUS LIVING

THE BEGINING

Prajapati Group began its journey in 1995 with the incorporation of its flagship company, Prajapati Constructions Ltd. The directors, Mr. Rajesh Prajapati, B.E (Mech) and Mr. Rakesh Prajapati, B.Com graduate, sons of well known philanthropist Late Shri Rohitaswa Prasad Prajapati, formed this company on the foundation of quality construction & timely possession. Over 20 projects in Navi Mumbai & Hyderabad - which encompass over 1 million sq.ft space and over 1500 units have been delivered on time, if not before.

By Adopting fair & transparent business practices and self impose ethical code of conduct, Prajapati Group has succeeded in creating a brand which is associated with Trust.



25+
PROJECTS IN NAVI MUMBAI

1 MILLION SQ.FT.
CONSTRUCTION DELIVERED

1500+
HAPPY FAMILIES IN PORTFOLIO

ON-TIME
COMPLETION OF EVERY PROJECT

THE MAGNIFICENCE



The Jewel of Dronagiri

5 TOWERS

G+19
FULLY RESIDENTIAL
LIFESTYLE PROJECT

352 FLATS
WITH AMPLE
PARKING

4000 sq.mtrs.
OF PODIUM LEVEL
AMENITIES



FEATURED AMENITIES

DRONIGIRI'S FINEST PROJECT
COMES WITH A LIFESTYLE &
AMPLE AMENITIES

- 

Well Equipped
Gym
- 

Amphitheatre
with Raised
Seating
- 

Elevated
Jogging
Track
- 

Swimming
Pool
- 

Skywalk
Over the Pool
- 

Club house with
Indoor Games
- 

Kids Play Area
with Equipments
- 

Leisure Deck
Seating
- 

Party Lawn
with Stage



JOGGING TRACK



MULTI-PUSPOSE COURT



SWIMMING POOL



KIDS PLAY AREA

THE PODIUM

WITH AMPLE SPACE
TO INDULGE IN WITH YOUR
LOVED ONES



SKYWALK OVER THE POOL

TO GET DRENCHED
INTO THE SERENITY AND
ENJOY THE LAVISHNESS



THE HAVEN

A LUXURIOUS HAVEN FOR THE ONES YOU LOVE

Prajapati Magnum offers you a lifestyle that's unparallel as are the views. The project is in proximity of A NATURAL BEACH, giving you much more than sensational sunrises and scintillating sunsets. A morning jog, an evening stroll, the calming sea breeze, the frolicking waves, there's so much more to do.

STANDARD FLAT AMENITIES

- AC Points in all rooms
- Vitrified Flooring in all rooms
- Granite on all four sides of window
- Anodized aluminum sliding windows
- Telephone points in the living room
- Branded sanitary & CP fittings
- Intercom connectivity
- Video Door Phone
- Provision for inverter



ENTRANCE LOBBY



BEDROOM



MASTER BEDROOM



CHILDREN BEDROOM

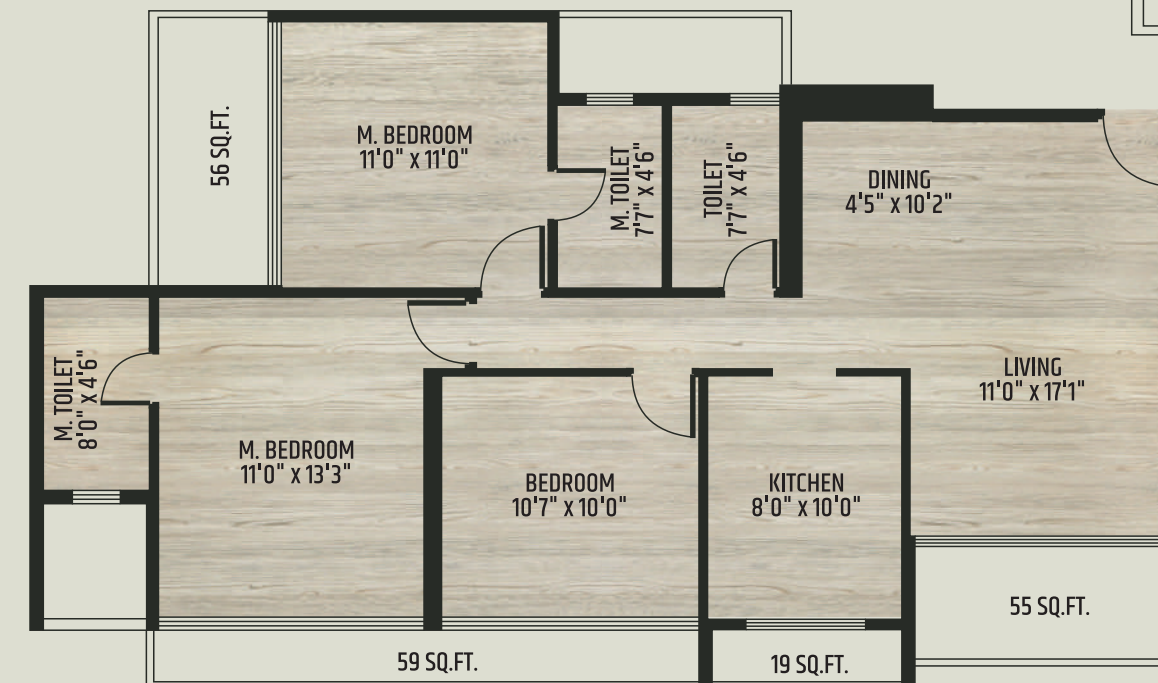
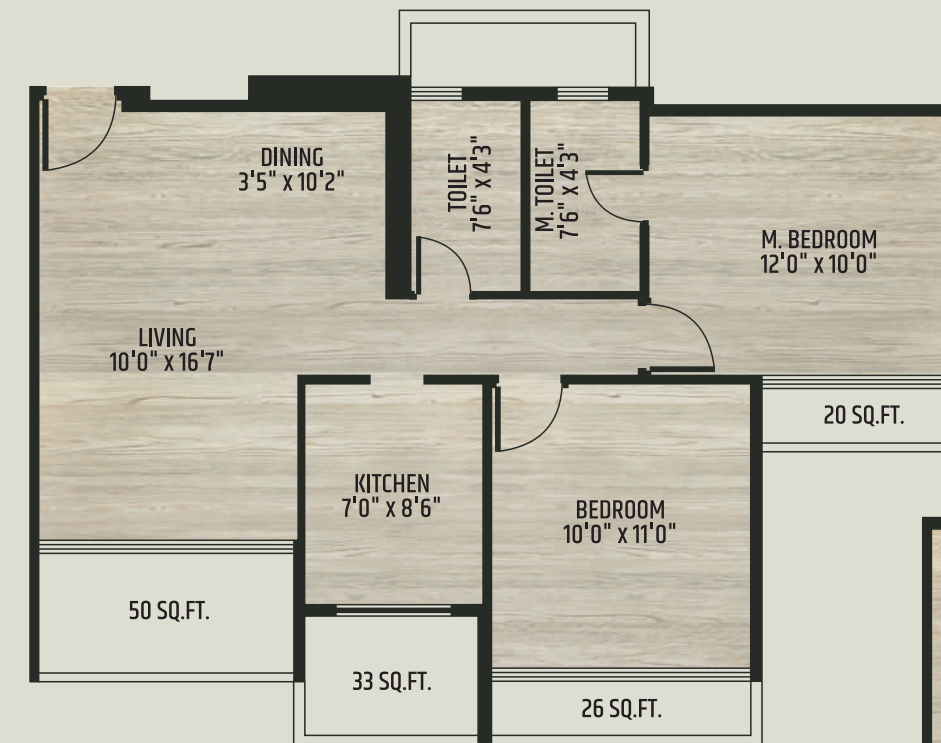
OUR SHOW FLAT

GIVES YOU A GLIMPSE OF
THE GRAND VIEW OF
YOUR UPCOMING HOME



OUR FLOOR PLANS

GIVES YOU A GLIMPSE OF
THE GRAND VIEW OF
YOUR UPCOMING HOME



THE LOCATION

A METROPOLIS IN MAKING

Located in the Southern end of Navi Mumbai & spread over 1777 hectares of land, Dronagiri is a pearl in the making, near fast-paced Uran,

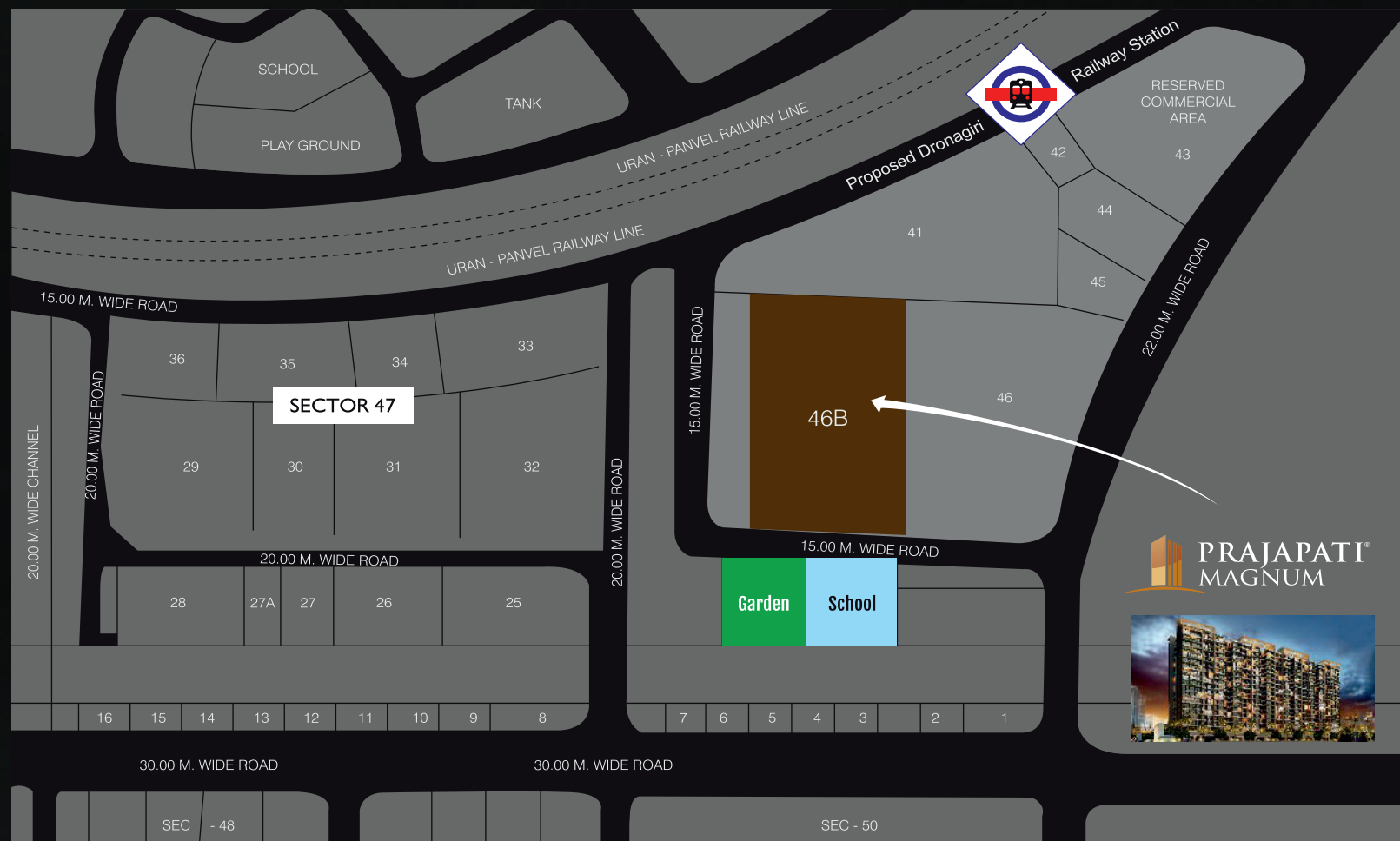
It is Located near the central business districts of Belapur, Nerul & Vashi.

OUR PROJECT IS LOCATED IN AN IDEAL LOCATION

12kms. Upcoming International Airport	3kms. Uran Beach	4kms. Mora Jetty	5kms. JNPT - SEZ
---	----------------------------	----------------------------	----------------------------

200mtr. Seawoods - Uran Railway Line	6kms. Proposed Mumbai Trans Harbour Link
--	--



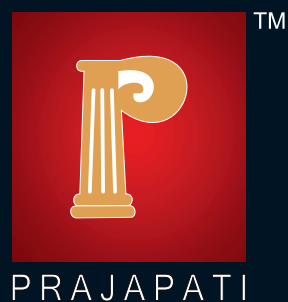


LOCATION PLAN (Not to Scale)



Plot no. 46/B, Sector 47, Dronagiri,
Navi Mumbai, Maharashtra - 400 702.

Architect :
M/s. Soyuz Talib Architects Pvt. Ltd. Ph : 022 - 27810762.
Structural Consultant :
M/s. Structural Concept Design Pvt. Ltd. Ph : 022 - 27810993.
Legal Advisor :
M/s. M. Tripathi & Co. Ph : 022 - 27891453.



M/S PRAJAPATI DEVELOPERS

Corporate Office :
Prajapati House, Panvel, - Matheran Rd., Plot no. 13/B,
Sector 19, New Panvel, Navi Mumbai - 410 206.
Tel.: 022-27456291.

Contact : 8080 5040 56

info@prajapatigroup.com | www.prajapatigroup.com

Our Associates :



MAHARERA Registration No.:
P52000001121 | P52000001425
URL - www.maharera.mahaonline.gov.in

