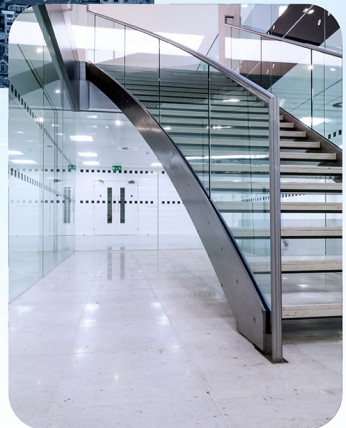


GRAND SPACES FOR YOUR BUSINESS



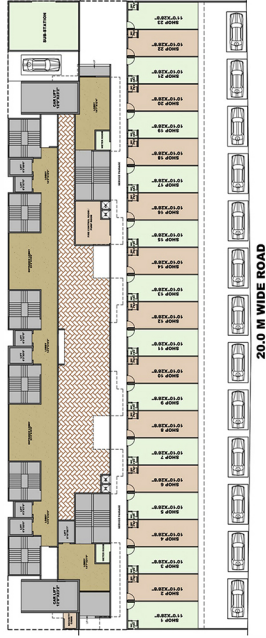



PRAJAPATI™
Ornate
 — Luxurious Living —

Features:

- 23 shops on ground and 23 commercial units on 1st floor
- Arcade look - separate entrance lobby and staircase
- Separate stretcher lift for commercial
- Width (Darshan) - about 11 ft.
- Depth - min 29 ft.
- Height - 14 ft with a loft of 2.5 mtrs. length
- Units can be easily merged (side by side/up & down)
- Lobby of min 6.9 feet on 1st floor
- Back door entrance on ground floor for loading/unloading of goods
- Toilet and water connection in each unit
- Well defined display area for name boards

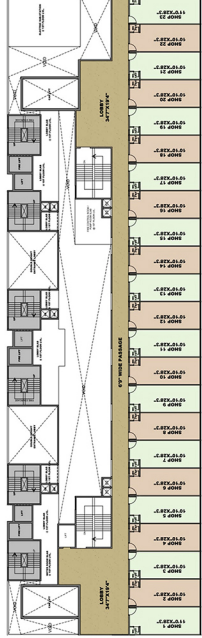
Commercial Floor Plan (Ground Floor)



PRAJAPATI ORNATE

Commercial Floor Plan (Ground + First Floor)

Commercial Floor Plan (First Floor)



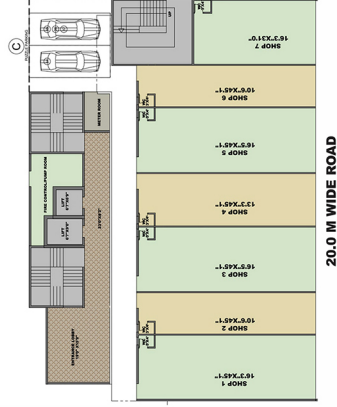


PRAJAPATI™
Opal
 Where Happiness Resides

Features:

- 7 shops on ground and 7 commercial units on 1st floor
- Arcade look - separate entrance lobby and staircase
- Width (Darshan) - min 10.6 feet to max. 16.5 feet
- Depth - min. 31 feet to max. 45 feet
- Height - 14 feet with a loft of 2.5 mtrs. length
- Units can be easily merged (side by side/up & down)
- Lobby - min. 13.3 feet on 1st floor
- Back entrance on ground floor for service and fire exit
- Toilet and water connection in each unit
- Well defined display area for name boards

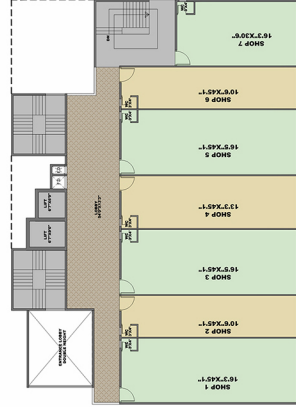
Commercial Floor Plan (Ground Floor)

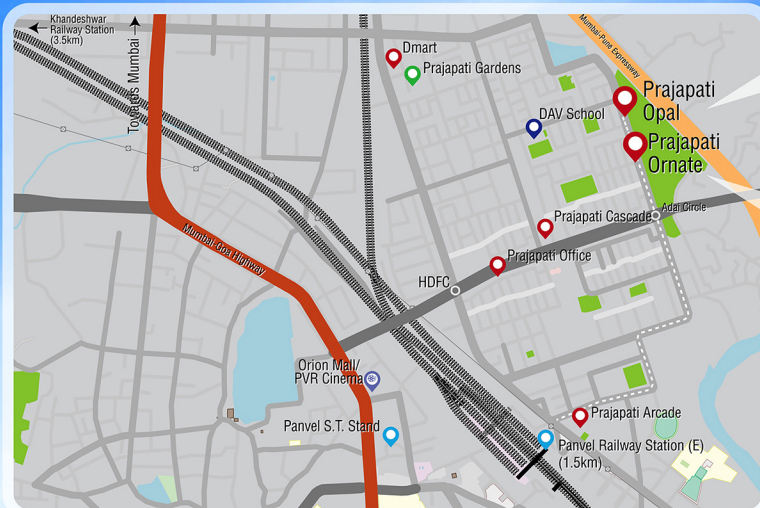


PRAJAPATI OPAL

Commercial Floor Plan (Ground + First Floor)

Commercial Floor Plan (First Floor)





PRAJAPATI™
Opal
Where Happiness Resides

PRAJAPATI™
Ornate
— Luxurious Living —

Location Advantages :



Prime Location -
In the heart of
New Panvel (E)



1.5 kms away
from Panvel
railway station



CIDCO Node with
fully developed
infrastructure



3 kms from upcoming
Navi Mumbai
Airport



Quick access to
Mumbai - Pune
express highway



The next commercial
hotspot in
Panvel



4 lane road
in front of
commercial units

Location Benefits:

- In the heart of New Panvel City at CIDCO node situated in a bustling residential area
- 4 lane-20 meters wide road in front of the shops and commercial units that are on the main road
- The shops and commercial units face the main road connecting the NAINA & CIDCO area with the Mumbai Pune Highway. It is also in close proximity to NAINA, Panvel (Navi Mumbai Airport Influence Notified Area).
- Located in the vicinity of Mumbai-Pune Expressway and the Sion-Panvel Highway, it provides ease in road connectivity.
- The New Panvel Population has been increasing on an average of 5% per year for the past several years indicating consistency in migration



Infrastructure:

- Panvel offers excellent local rail connectivity to key parts of the Mumbai Metropolitan Region (MMR), including Thane, Kharghar, South Mumbai, Pune and Vashi. It is also a gateway to the Konkan region.
- The upcoming Navi Mumbai International Airport is approx. 3 kms from the project
- The proposed Mumbai Trans-Harbour Sea Link (touted as the longest sea link) boosts connectivity
- The proposed 140-km Virar-Alibaug Multimodal Corridor (VAMC), which is divided in two phases (90 kms Phase-I from Virar to Panvel and 50 kms Phase-II from Panvel to Alibaug) is expected to take off soon.

These infrastructural developments will fast-track the transformation of Navi Mumbai into a developed city

Return on Investments:

- Tremendous growth in the last 3 years and property prices have appreciated by 300% in the Panvel CIDCO region according to research article on 99Acres.com
- New Panvel area has the highest rental return in the Panvel – Khanda – Karanjade Area

Payments:

- Long term Lease option available
- Payments according to schedule available



Ideas for usability:

- Large showrooms - as the units are easy to be merged
- Hospitals - as wide lobby and stretcher lift is available
- Restaurants/Café - as washrooms are available in every unit
- Banks and administrative offices
- Private business like salons, spas and gyms on the first floor.

About us:

- 25+ projects in Navi Mumbai
- 1 Million sq. ft. of construction handed over
- Customer satisfaction seen in 1500+ happy families
- Quality construction and timely possession
- Transparent and ethical business conduct
- Excellence in work and quality service



Office: Plot - 13/B, Sec - 19, New Panvel, Navi Mumbai - 410 206.

Site Address: Sector 10, Opposite Rajiv Gandhi Maidan, New Panvel (E), Navi Mumbai.

MahaRERA Number: Ornate - P52000019057 | Opal - P52000019078 | maharera.mahaonline.gov.in

Call: 8080 5040 56 | **Web:** www.prajapatigroup.com | **Email:** info@prajapatigroup.com

